

Microsoft

- ◆ Does a PhD Advance your career?
- ◆ How can an Advanced Degree make an impact on product development?
- ◆ How does an Advanced Degree contribute towards the monetary value of a product?
- ◆ What are the advantages/disadvantages of attaining your PhD for the industry?
- ◆ What are some of the “Next Big Things” for Advanced Degree students to research?

If you have some of these questions and many more regarding your Advanced Degree (masters or PhD) then tune in to this very special webinar. We'll have current Doctoral Professors and Microsoft PhD's as panelists as they discuss some of the above questions as well as many more!

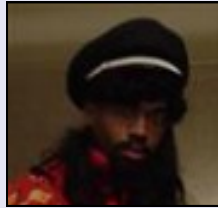
Dates: February 6th & 20th @ 6pm PST

Registration Links:

Feb. 6th: www.alturl.com/z9axp

Feb. 20th: <http://alturl.com/knu7r>

Please note: Both dates will have exactly the same content.



James Mickens is a researcher in the Distributed Systems group at Microsoft's Redmond lab. Much of his current research focuses on web applications, with a particular emphasis on the development of JavaScript frameworks that help developers diagnose and fix bugs that arise in widely deployed web applications. James is also working on several projects that involve mobile computing and the design of secure programs that run atop advanced hardware platforms. James received his PhD in computer science from the University of Michigan, and a bachelor's degree in computer science from Georgia Tech.



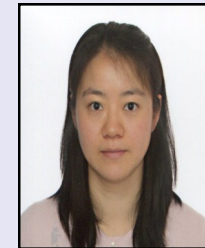
Mark Staveley graduated with his PhD from Memorial University of Newfoundland and is now a Software Development Engineer in Test II working with the High Performance Computing Team. Prior to MSFT, Mark has also worked with start-ups and 2 of Canada's largest supercomputing centers; ACEnet and HPCVL.



Juncao Li graduated from Portland State University in Dec. 2010. His Ph.D. research focuses on hardware/software co-verification. Juncao currently works as an SDE in Microsoft Windows, where he keeps working on his interests in developing quality tools for Windows devices/drivers.



Ronald Metoyer is an Associate Professor in the School of Electrical Engineering and Computer Science at Oregon State University. He received a B.S. in Computer Engineering from UCLA in 1994 and a Ph.D. from the Georgia Institute of Technology in 2002. His research interests span the fields of Human-Computer Interaction, Visualization, and Computer Graphics and Animation. His current research is focused on information visualization where he seeks to support end users in dealing with the large amount of data becoming available from the growing number of data sources. Dr. Metoyer's work has applications in ecology, healthy aging, energy consumption, and K-12 education. He is a member of the IEEE and ACM and was the recipient of a 2002 National Science Foundation CAREER award.



Jian Zhang received her Ph.D in electrical and computer engineering and master of finance from the University of Florida in 2007. Her research interest was machine learning aided system performance modeling. She began her career as program manager at SharePoint product group of Microsoft in 2008. She has been working on high performance computing and social computing infrastructure design and development. She decided to pursue PhD degree because of she loves the research area and enjoys the challenges that she might face on the way.”